

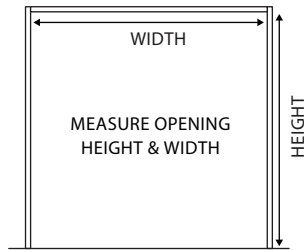


SMARTROBE INSTALLATION INSTRUCTIONS

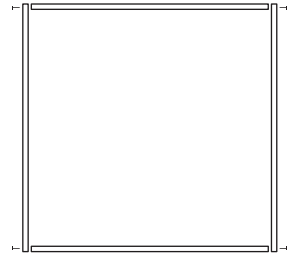
Table A: Measurements are based on 19mm (thick) jambs and head material. eg. 93/112x19.
 Door Height-opening height
 1980=2055

Door width-opening width	Track Size Required	
2 x 610	1250	1200
3 x 610	1850	1800
4 x 610	2450	2400
2 x 810	1650	1600
3 x 810	2450	2400
2 x 910	1850	1800

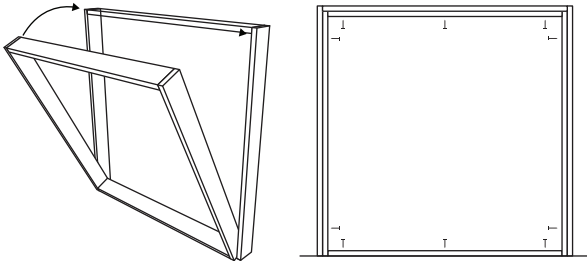
1 Measure stud opening to ensure it matches required dimensions as per Table A (above).



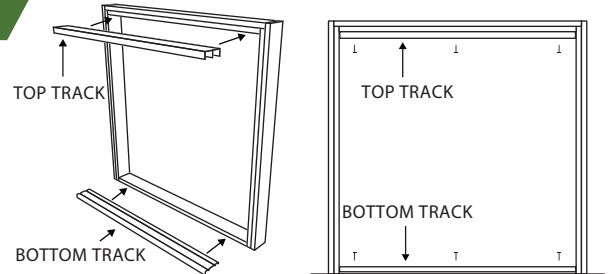
2 Fix the Timber Jambs to the head and sill members (supplied) as per diagram. (Jambs and Head not)



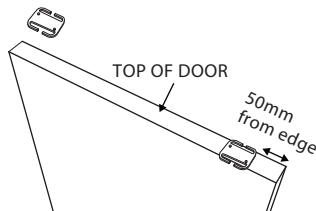
3 Place the assembled frame in the opening. Pack and fix to studs. Make sure frame is assembled square,



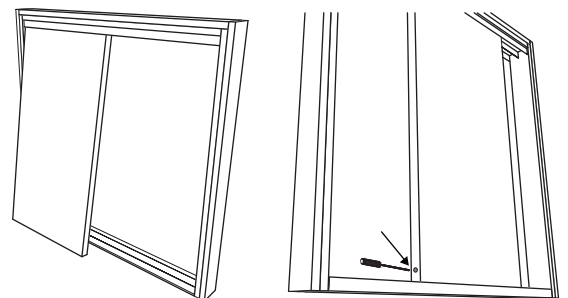
4 Fit the top and bottom track. Fix using track screws



5 Fix Nylon Guides to top of doors 50mm from the edges using screws provided.



6 Fit door in the opening. Lift door into top track and then lower into bottom track. If door does not sit plumb against the jamb adjust the wheel assembly through the hole in side of door using phillips screw-



7 To finish off, fix mitred architraves in place (not supplied).